

CHAIN LAKE HEALTH RESORT SUBDIVISION

Part of S.E. 1/4 of Section 8
T. 24 N. R. 2 E.
Plainfield Township
IOSCOE COUNTY MICHIGAN
Surveyed December 1923. Scale 1:
Scale of feet: 1" = 100'

KNOW ALL MEN BY THESE PRESENTS: That we, John Goer Lizzie Goer, his wife, both of Saginaw, Michigan, as our progenitors, have caused the land embraced in the annexed survey, laid out, and platted; to be known as "Chain Lake Health Resort", a subdivision of part of S.E. 1/4 of Sec. 8, T. 24 N. R. 2 E. Plainfield Twp., Iosco County, Michigan, and the same, as shown on said plat, are hereby dedicated to the use public.

Signed and Sealed in Presence of:
John Goer
Lizzie Goer

State of Michigan | S.S.
County of Saginaw |
On this 23rd day of September 1924, personally appeared before me John Goer and Lizzie Goer, his wife, me to be the persons who made the above dedication, and ask the same to be their free act and deed.
Herbert R. Marston
Notary Public
My Commission expires Feb 21st 1927

OFFICE OF COUNTY TREASURER
This is to certify that there are no tax titles or liens in State on by individuals on the above described land for the preceding the 1st day of January 1924, and for the said period of 3 years have been paid as shown by of this office; excepting taxes now in process of collection on County officers.
W. H. Price

DESCRIPTION
The land embraced in the annexed plat of "Chain Lake Health Resort" a subdivision of part of S.E. 1/4 of Sec. 8, T. 24 N. R. 2 E., Pl. Twp. Iosco County, Michigan, is described as follows:
Beginning at the South 1/4 post on the Section line between Sections 8 and 9, T. 24 N. R. 2 E.; thence N. 1/2 E. on said 159.7 ft. to the shore of Lake Catherine, 857 ft. across 1 from north shore, total 1056 ft. to E. 1/4 post of Section 8; thence N. 1/2 E. on a line which bears S. 15° E. 742.5 ft. to the shore of Chain Lake, then along shore S. 87° W. N. 87° 300 ft.; S. 33° 1/2 W. 248 ft.; S. 2° W. 500 ft.; then S. 83° 1/2 E. 420 ft.; and N. 62° E. 1600 ft. to the Point of Beginning. Calculated area of land in subdivision, 48 6400 Ac.

Iosco Chain Lake Health Resort
Dec 3-1924
J. L. Bringle

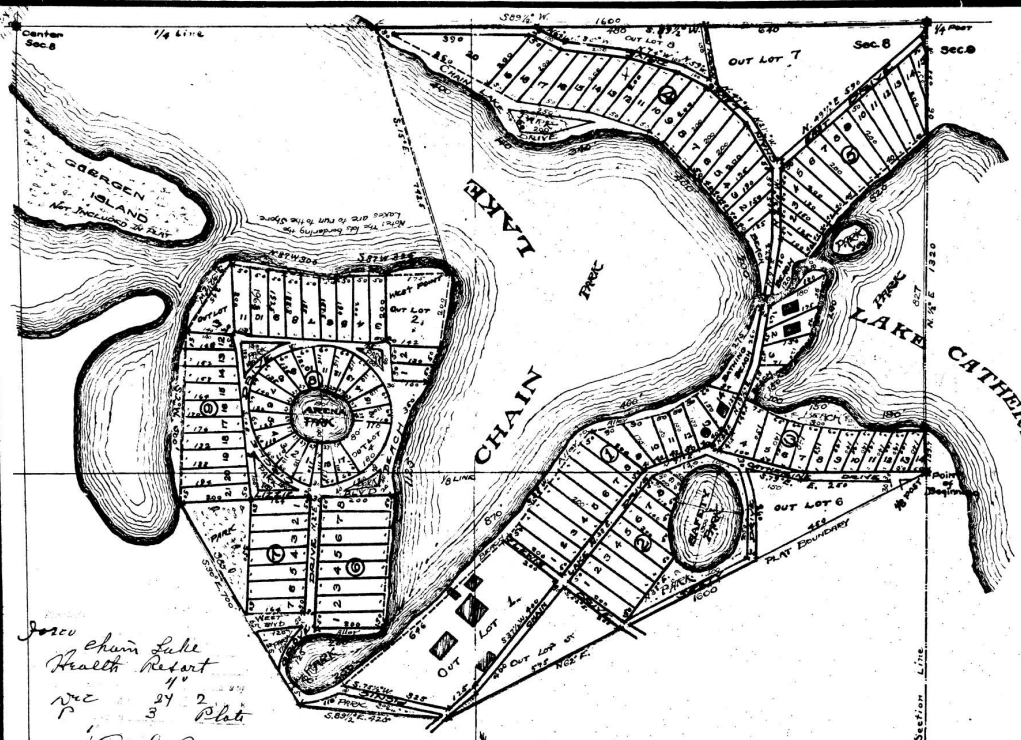
Dec 3-1924
J. L. Bringle

Dec 6-1924
J. L. Bringle

This plat was approved by the Township Board of the Township of Plainfield, Iosco County, Michigan, at a meeting held on the 12 day of December 1924.
John L. Bringle
Township Clerk

This plat was approved at a meeting held on the 12 day of December 1924.
David H. Harrison
Judge of Probate
Frank C. Wheeler
County Clerk
W. H. Price
County Treasurer

Bearings of lines on this plat are based on bearings of compass needle (the Variation vernier set at 8° 14' W. December 10th 1923) and on transit angles. Dimensions are in feet and tenths.
I hereby certify that I have surveyed the land embraced in the annexed plat; that I have drawn the plat according to said survey, and that metal monuments consisting of 1 in. iron pipe 12" to 16" long have been placed at all angles, at intersections of alleys and drives and at points marked 'X'.
John D. Appleton
Registered Surveyor



CHAIN LAKE HEALTH RESORT **SUBDIVISION** Part of S.E. 1/4 of Section 8 T. 24 N. R. 5 E. Plainfield Township IOSCO COUNTY MICHIGAN Surveyed December 1923. Scale 1" = 400 feet

KNOW ALL MEN BY THESE PRESENTS: That we, John Goergen, Lizzie Goergen, his wife, both of Saginaw, Michigan, as owners and proprietors, have caused the land embraced in the annexed plat surveyed, laid out, and platted, to be known as "Chain Lake Health Resort", a subdivision of part of S.E. 1/4 of Sec. 8, T. 24 N., Plainfield Twp., Iosco County, Michigan, and the 7-10-13, Branchville, Drives, as shown on said plat, are hereby dedicated to the use of the public.

Signed and Sealed in Presence of:
John Goergen
Lizzie Goergen
E. J. Thomas
A. J. Thomas

State of Michigan | S.S.
 County of Saginaw |
 On this 23rd day of September, 1924, person appeared before me John Goergen and Lizzie Goergen his wife me to be the persons who made the above dedication, and ask the same to be their free act and deed.
Herman R. Marini
 Notary
 My Commission expires Feb. 21st 1927

OFFICE OF COUNTY TREASURER
 This is to certify that there are no tax titles on liens he State on by individuals on the above described land for the preceding the 1st day of October, 1924, and the for the said period of 5 years have been paid as shown by of this office; excepting taxes now in process of collection on County officers.
W. H. Price

DESCRIPTION
 The land embraced in the annexed plat of "Chain Lake Health Resort" a subdivision of part of S.E. 1/4 of Sec. 8, T. 24 N. R. 5 E., Plainfield Twp., Iosco County, Michigan, is described as follows:
 Beginning at the South 1/8 post on the Section line between Sections 8 and 9, T. 24 N., R. 5 E.; thence N. 1/2 E. on said line 159.7 ft., to the shore of Lake Catherine, 837 ft. across it from North shore, total 1820 ft. to E. 1/4 post of Section 8; thence S. 89 1/2 W. on 1/4 line 1600 ft. to E. shore of Chain Lake; then Chain Lake on a line which bears S. 10° E. 142.5 ft., to the West point of said lake; then along shore S. 87° W. 1 N. 87° W. 300 ft.; S. 32 1/2 W. 245 ft.; S. 2° W. 800 ft.; then S. S. 83 1/2 E. 420 ft.; and N. 62° E. 1600 ft., to the Point of Saginaw. Calculated area of land in subdivision, 48 1/2 Acre

Iosco Chain Lake Health Resort
 Dec 24 1924
 J. W. Romig

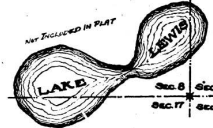
Dec 3-1924
 J. L. Hume

Dec 6-1924
 J. L. Hume

This plat was approved by the Township Board of the Township of Plainfield, Iosco County, Michigan, at a meeting held on the 10 day of July 1924.
John J. Gore
 Township Clerk

This plat was approved at a meeting held on the 13 day of Dec. 1924.
David Haines Judge of Probate
Frank C. Hume County Clerk
W. H. Price County Treasurer

Bearings of lines on this plat are based on bearings of compass needle (the Variation Vernier set at 8° 14' W. December 10th, 1923) and on transit angles. Dimensions are in feet and tenths.
 I hereby certify that I have surveyed the land embraced in the annexed plat; that I have drawn the plat according to said survey, and that metal monuments consisting of 1 in. iron pipe 12" to 18" long have been placed at all angles, at intersections of alleys and drives and at points marked X.
John W. Appleton
 Registered Surveyor



19888-03

STATE OF MICHIGAN

IN THE 23RD JUDICIAL CIRCUIT COURT FOR THE COUNTY OF IOSCO

In Re: CHAIN LAKE DRIVE, CHAIN LAKE HEALTH RESORT SUBDIVISION

FILE NO 90-7397-CH

JAMES W. SHOTWELL * (P25398)
Attorney for Petitioners
408 West Lake Street
P.O. Box 97
Tawas City, Michigan 48764
(517) 362-4422

JUDGMENT VACATING
PORTION OF PLAT

GARY L. HICKS (P31645)
Assistant Attorney General
Attorney for State Defendant
Department of Attorney General
Natural Resources Division
P.O. Box 30028
Lansing, Michigan 48909
(517) 373-7540

A TRUE COPY

23rd CIRCUIT COURT

At a session of said Court
held in the City of Tawas City
County of Iosco, State of Michigan
on the 22ND day of January, 1991.

PRESENT: HONORABLE J. RICHARD ERNST
Circuit Court Judge

Upon the reading the Varified Complaint filed herein and the
filing of the Motion for entry of Judgment and filing of certain
consent judgments in the above-entitled matter, and the Court
being fully advised in the premises:

IT IS HEREBY ORDERED that the Vacating of that Portion
of Chain Lake Drive as described as follows:

Part of CHAIN LAKE HEALTH RESORT subdivision of part
of the Southeast 1/4 of Section 8, Township 24 North,

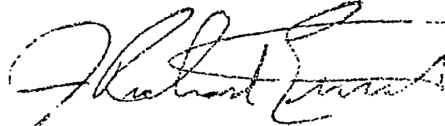
19888

PARK located along the Southerly line of Lots 10 through 20 of Block 4 of said CHAIN LAKE HEALTH RESORT subdivision, lying between said Southerly line and the shore of Chain Lake, be vacated.

IT IS FURTHER ORDERED that Petitioners shall prepare a new Plat of the part of the subdivision affected as described above.

DATED:

1-22-91



J. RICHARD ERNST
Circuit Court Judge

Drafted By: JAMES W. SHOTWELL
Attorney for Plaintiffs/Petitioners
408 West Lake Street
P.O. Box 97
Tawas City, Michigan 48764
(517) 362-4422
Fax No.: (517) 362-5291